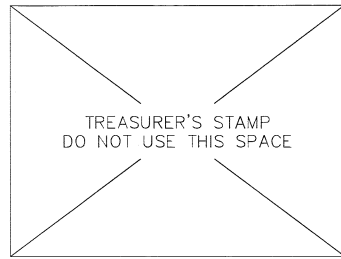
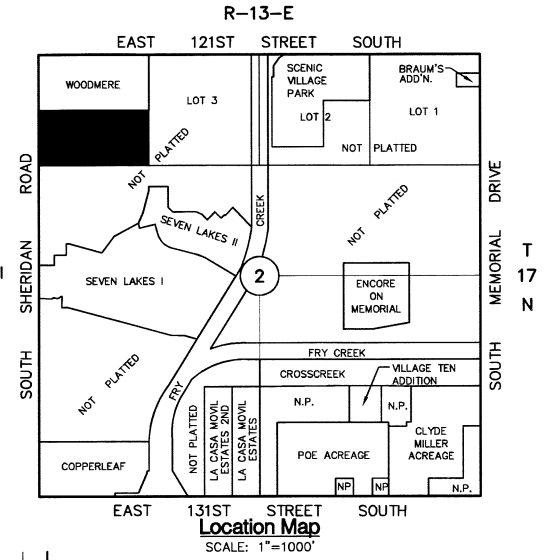
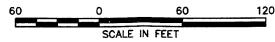


Copyright © 1991-2015 Sack and Assoc., Inc.



'FINAL PLAT'
Wood Hollow Estates
 A SUBDIVISION OF PART OF THE
 S/2 OF GOVERNMENT LOT 4 OF SECTION 2, T-17-N, R-13-E
 CITY OF BIXBY, TULSA COUNTY, OKLAHOMA
 Planned Unit Development Number 80



PLAT No. _____

FINAL PLAT
 CERTIFICATE OF APPROVAL
 I HEREBY CERTIFY THAT THIS PLAT
 WAS APPROVED BY THE CITY OF
 BIXBY:

ON _____
 BY _____
 MAYOR - VICE MAYOR

THIS APPROVAL IS VOID IF THE
 ABOVE SIGNATURE IS NOT
 ENDORSED BY THE CITY MANAGER
 OR CITY CLERK.

BY _____
 CITY MANAGER - CITY CLERK

Owner
 WOOD HOLLOW ESTATES, LLC
 ATTN: WAYNE FARABOUGH
 11001 SOUTH MEMORIAL DRIVE
 TULSA, OKLAHOMA 74133
 PHONE: (918) 369-3181

Engineer / Surveyor
 SACK AND ASSOCIATES, INC.
 3530 EAST 31ST STREET SOUTH, SUITE A
 TULSA, OKLAHOMA 74135-1519
 PHONE: (918) 592-4111
 E-MAIL: SA@SACKANDASSOCIATES.COM
 C.A. No. 1783

Basis of Bearings

THE BEARINGS SHOWN HEREON ARE BASED ON THE OKLAHOMA STATE PLANE COORDINATE SYSTEM.

Monumentation

ALL CORNERS TO BE SET USING A 3/8"x18" IRON PIN WITH A YELLOW CAP STAMPED "SACK LS 1139" AFTER INSTALLATION OF UTILITIES AND COMPLETION OF STREET IMPROVEMENTS, UNLESS OTHERWISE NOTED.

Legend

- B/L = BUILDING LINE
- F/E = FENCE EASEMENT
- SWE = SIDEWALK EASEMENT
- U/E = UTILITY EASEMENT
- [12345] = STREET ADDRESS

Subdivision Statistics

SUBDIVISION CONTAINS 51 LOTS IN 3 BLOCKS AND RESERVE 'A'

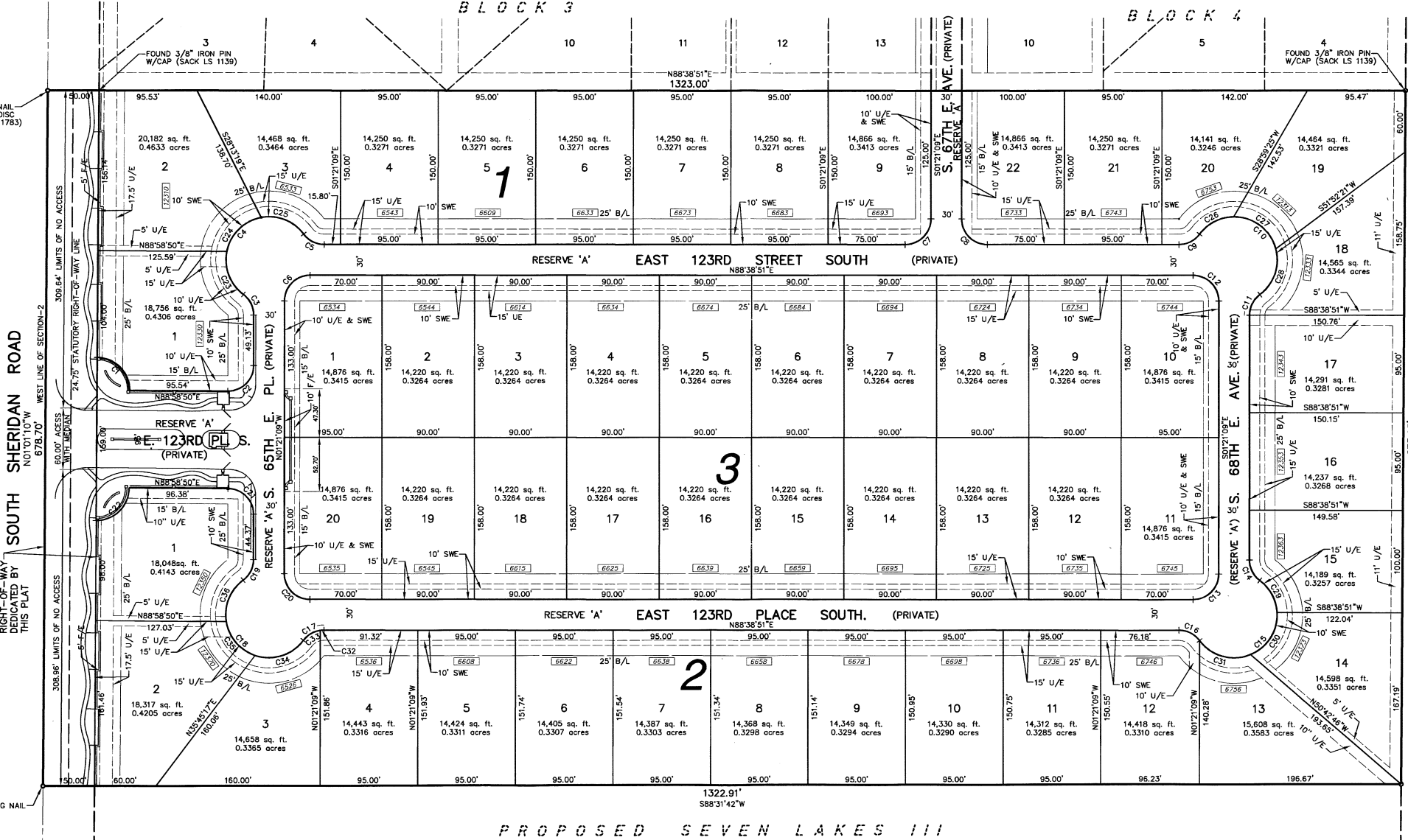
BLOCK 1 CONTAINS 3.2030 ACRES (139,523 S.F.)
 BLOCK 2 CONTAINS 7.4763 ACRES (325,668 S.F.)
 BLOCK 3 CONTAINS 6.5892 ACRES (287,024 S.F.)

RESERVE 'A' CONTAINS 2.5231 ACRES (109,906 S.F.)

Addresses

ADDRESSES SHOWN ON THIS PLAT ARE ACCURATE AT THE TIME THE PLAT WAS FILED. ADDRESSES ARE SUBJECT TO CHANGE AND SHOULD NEVER BE RELIED ON IN PLACE OF THE LEGAL DESCRIPTION.

CURVE	LENGTH	RADIUS	DELTA	CHORD BEARING	CHORD LENGTH
C1	50.27'	32.00'	90°00'00"	S48°01'10"E	45.25'
C2	39.42'	25.00'	89°18'59"	N43°49'50"E	35.46'
C3	23.28'	25.00'	53°20'37"	N28°01'28"W	22.44'
C4	144.18'	42.00'	196°41'14"	S43°38'51"W	83.11'
C5	23.28'	25.00'	53°20'37"	S64°40'51"W	22.44'
C6	39.27'	25.00'	90°00'00"	S43°38'51"W	35.36'
C7	39.27'	25.00'	90°00'00"	N43°38'51"E	35.36'
C8	39.27'	25.00'	90°00'00"	S46°21'09"E	35.36'
C9	23.28'	25.00'	53°20'37"	N61°58'32"E	22.44'
C10	144.18'	42.00'	196°41'14"	N46°21'09"W	83.11'
C11	23.28'	25.00'	53°20'37"	S29°19'10"W	22.44'
C12	39.27'	25.00'	90°00'00"	N46°21'09"W	35.36'
C13	39.27'	25.00'	90°00'00"	N43°38'51"E	35.36'
C14	23.28'	25.00'	53°20'37"	S28°01'28"E	22.44'
C15	144.18'	42.00'	196°41'14"	N43°38'51"E	83.11'
C16	23.28'	25.00'	53°20'37"	N64°40'51"W	22.44'
C17	23.28'	25.00'	53°20'37"	S61°58'32"W	22.44'
C18	144.18'	42.00'	196°41'14"	S46°21'09"E	83.11'
C19	23.28'	25.00'	53°20'37"	N25°19'09"E	22.44'
C20	39.27'	25.00'	90°00'00"	S46°21'09"E	35.36'
C21	39.12'	25.00'	89°40'01"	N49°11'10"W	35.29'
C22	50.27'	32.00'	90°00'00"	N43°58'50"E	45.25'
C23	47.28'	42.00'	64°30'15"	N22°26'39"W	44.83'
C24	49.98'	42.00'	68°11'18"	N43°54'07"W	47.09'
C25	46.91'	42.00'	63°59'42"	S70°00'28"E	51.98'
C26	36.65'	42.00'	52°43'54"	S61°40'11"W	37.30'
C27	55.52'	42.00'	75°44'46"	N64°05'29"W	51.57'
C28	50.00'	42.00'	68°12'33"	N17°53'11"E	47.10'
C29	36.85'	42.00'	50°16'18"	N29°33'37"W	35.68'
C30	51.77'	42.00'	70°37'43"	N30°53'23"E	48.56'
C31	55.55'	42.00'	75°47'13"	S75°54'09"E	51.39'
C32	3.69'	26.00'	8°27'24"	S84°25'09"W	3.69'
C33	19.59'	25.00'	44°53'13"	S57°44'50"W	19.09'
C34	52.70'	42.00'	71°53'47"	N71°15'07"E	49.31'
C35	45.47'	42.00'	62°01'36"	N41°47'11"W	43.28'
C36	46.01'	42.00'	62°45'51"	N20°36'32"W	43.74'



NOT PLATTED